



IBC BUND

WITH FRAME & PVC COVER

INSTALLATION GUIDE

CONTACT

Address

Ecosure
Etills Ltd
Unit 1
Whiting Way
Melbourn
Hertfordshire
SG8 6NA

Office +44 1763 261781
Email sales@ecosure.co.uk
Website www.ecosure.co.uk
Live chat available.



THANK YOU

Thank you for purchasing the Ecosure Single IBC Bund with Frame and Cover. We trust you will be completely satisfied with your purchase. If you have any technical enquiries, please call 01763 261781 option 3. This industrial strength product is guaranteed frost-proof and is made from UV stabilised polymer.

IMPORTANT SAFETY INSTRUCTIONS

A risk assessment should be carried out to ensure the product can be assembled safely and with the correct PPE.

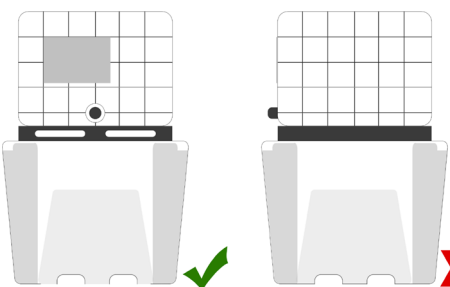
Tools required

- 8mm nut driver/spanner
- 6mm hex key
- Step ladder or other suitable working platform

**DO NOT STAND ON IBC BUND
OR LEAN LADDER AGAINST FRAME**

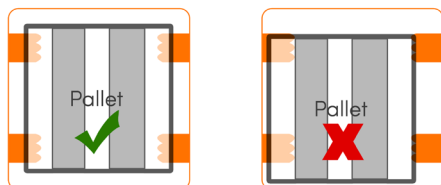
IBC POSITIONING

If your IBC has a wooden or plastic base you can site it directly on the support columns as shown. If your IBC has a metal or combination base, you must have a bund with grid



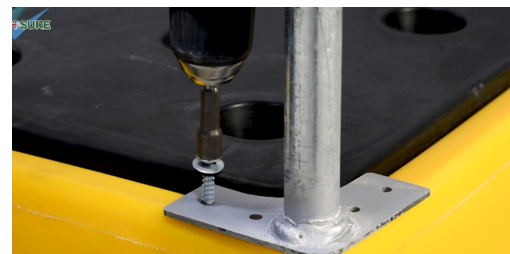
The Ecosure Single IBC Bund must be sited on a **flat, level base**. For installation guidance, please watch the promotional video at ecosure.co.uk

- Always check the solution being stored is suitable for MDPE.
- Ensure the outlet of your IBC faces forwards, in line with the fork pockets.
- Your IBC pallet should be centrally located on the IBC bund support columns.



IBC BUND WITH COVER INSTALLATION GUIDE

a. Using the self-tapping screws, attach the four vertical support bars to the four corners of the IBC Bund.



b. Loosen the grub screws on the angle brackets with a 6mm hex key and slide all four of the angle brackets on top of the vertical support bars.



c. Push two support bars in to the angle brackets, opposite each other.



d. Push the remaining two bars in to the angle brackets. Ensure all are squared up and tighten the grub screws.



e. Attach the roof supports between the two bars - ensuring the widest part is towards the front.



f. It is best to fit the PVC cover from back to front - ensuring it fits over all four corners of the frame before using the velcro fasteners. Then lower each rolled door - secure using the zip.

It is recommended that two or more people are used for this step.

