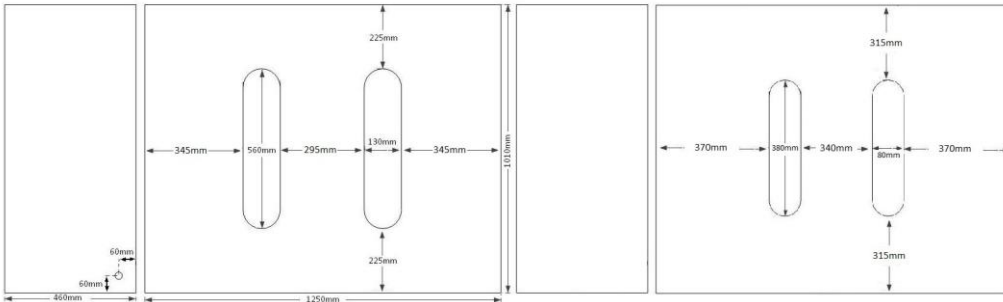
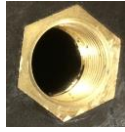


ECO500V1 WATER BUTT

Product description: upright 500 litre rectangular baffled water butt, available in a variety of colours



Product Information

Height	Length	Width	Weight	Outlet	Lid
1010mm	1250mm	460mm	33kg	1" BSP	9" screwdown

Sizes approximate, owing to shrinkage

PRODUCT NOTES:

- Use hole-cutter to fit rainwater diverter or overflow pipe where required, C50mm down from top of tank
- Raise the butt on our exclusive steel stand, a brick plinth or sleepers to use bib tap. Tank must be supported along entire length.
- Use brass isolation valve to connect irrigation hose and water the garden at the turn of a lever.

PRODUCT DETAILS:

- Available in a variety of colours to suit location
- Colour samples available upon request
- Manufactured from virgin polymer
- Approximate wall thickness: 6-7mm
- 9" vented lid as standard
- 1" BSP brass threaded outlet moulded into the tank
- Central baffles

OPTIONAL EXTRAS:

- Brass tap
- Brass isolation valve with hose connector
- Tank connectors
- Downpipe diverter or filter diverter
- Basket filter
- Fresha tabs
- Premium quality steel water butt stand
- Additional lid

BENEFITS:

- Frost proof in winter; plastic will not crack
- High capacity water storage for keen gardeners
- Slimline design; ideal when space is limited
- Robust, heavy duty product; industrial strength
- Shape maintained when full of water
- Opaque plastic reduces algae growth in sunlight
- Rotationally moulded for strength & durability
- 2 year warranty against manufacturing defects



Scan to view our full range of water tanks



Etills Ltd,
Unit 1 Whiting Way,
Melbourn,
Royston,
SG8 6NA



Call 01763 261781