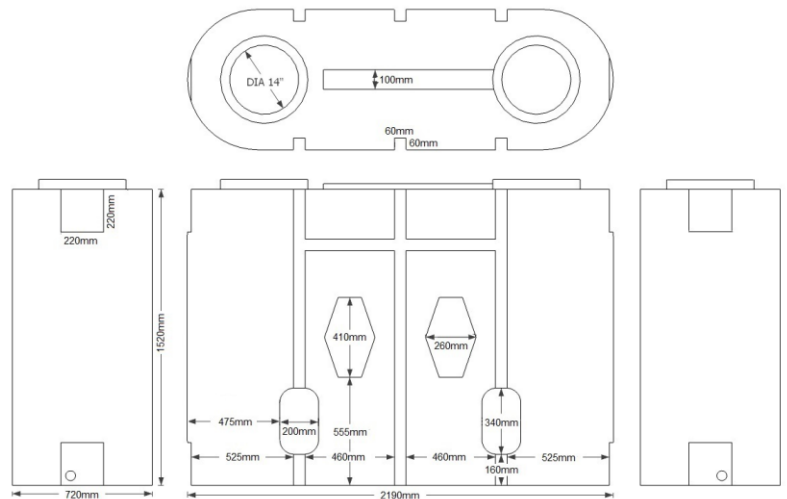
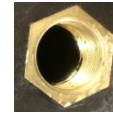


ECO1900SLBLK

Product description: upright 1900 litre slimline baffled storage tank, suitable for internal or external use



Product Information

Height	Length	Width	Weight	Outlets	Lid
1520mm	2190mm	720mm	120kg	2 x 2" BSP	14" screwdown

PRODUCT NOTES:

- Tank must be sited on level, fully supporting base.
- Additional fittings can be added as and where required without compromising tank's structural integrity.

Sizes approximate, owing to shrinkage
Specification subject to change; please call to confirm details

PRODUCT DETAILS:

- Made from virgin polymer
- Approximate wall thickness: 7mm
- 14" vented lid as standard
- 2 x 2" brass threaded outlets moulded into the tank
- Integral baffles

OPTIONAL EXTRAS:

- 16" lid (vented or non-vented)
- Second lid
- 1" outlets or moulded blank
- Brass tap
- Brass isolation valve with hose connector
- Tank connectors
- Stainless steel inserts

BENEFITS:

- Suitable for internal and external use
- Frost proof; will not crack in the cold
- Robust, heavy duty product; industrial strength
- Holds shape when tank is full
- Opaque plastic reduces algae growth in sunlight
- Slimline design; ideal when space is limited
- Rotationally moulded for strength and durability
- 2 year warranty against manufacturing defects



Scan to view our full range of water tanks



Etills Ltd,
Unit 1 Whiting Way,
Melbourn,
Royston,
SG8 6NA



Call 01763 261781