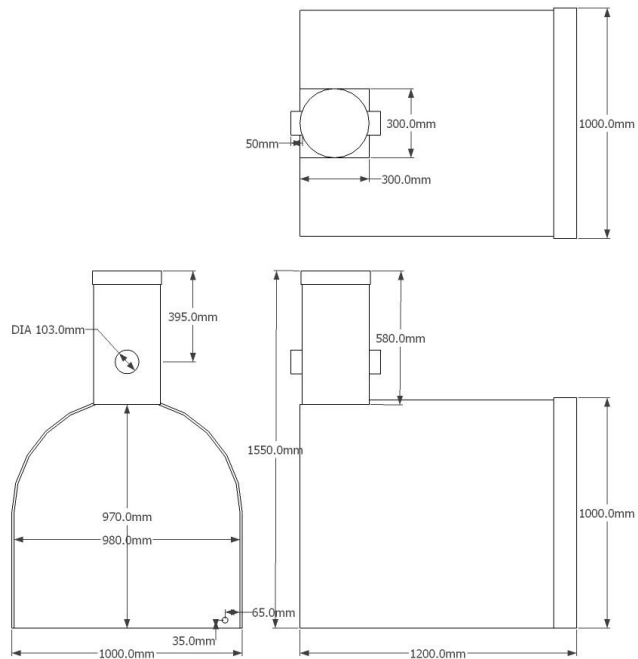


ECOD1000UND

Product description: underground D shape 1000 litre water tank



Product Information

Height (without neck)	Height (with neck)	Width	Length	Access	Weight	Outlet
1000mm	1555mm	1000mm	1200mm	300mm aperture	50kg	2 x 4", 1 x 1" BSP

Sizes approximate, owing to shrinkage

PRODUCT NOTES:

- Please ensure that the Installation Guidelines have been read and understood before commencing installation
- Only lift when empty
- If installed in a high water table or heavy clay soil, this water tank must be fully encased in concrete
- Designed to take pedestrian traffic only; if required to carry vehicular traffic, a structural engineer's design is required
- Top of the tank body must not finish any more than 500mm below ground level (access chamber flush with ground level)
- Without a structural engineer's design, tank must not be located adjacent to foundations, raised banks, patios or walls
- Pipe-falls should be a minimum of 2:100 in the direction of water-flow, i.e. rainwater pipe and service duct towards the tank and the overflow away from the tank

PRODUCT DETAILS:

- Made from virgin polymer
- One piece mould for extra strength
- Extended neck included; can be cut down
- Designed and manufactured in the UK

OPTIONAL EXTRAS:

- Filter box
- Range of pumps
- Tank connectors
- MDPE pipe

BENEFITS:

- Compatible with UK standard 4" (110mm) pipe fittings
- Connect multiple tanks together using 4" drainage pipe
- 1" BSP outlet is ideal for external pump connections
- Rotationally moulded for strength and durability
- 10 year warranty against manufacturing defects



Scan to view our full range
of water tanks



Etills Ltd,
Unit 1 Whiting Way,
Melbourn,
Royston,
SG8 6NA



Call 01763 261781